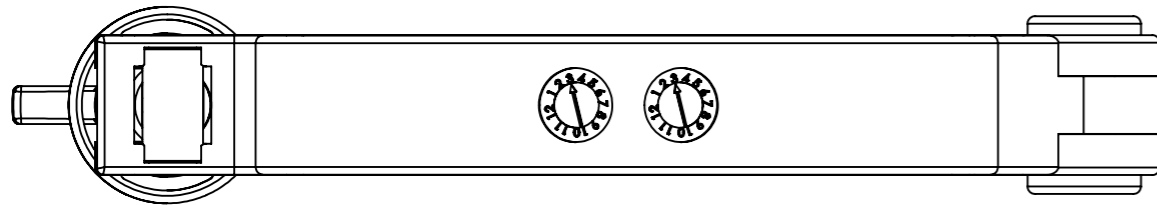
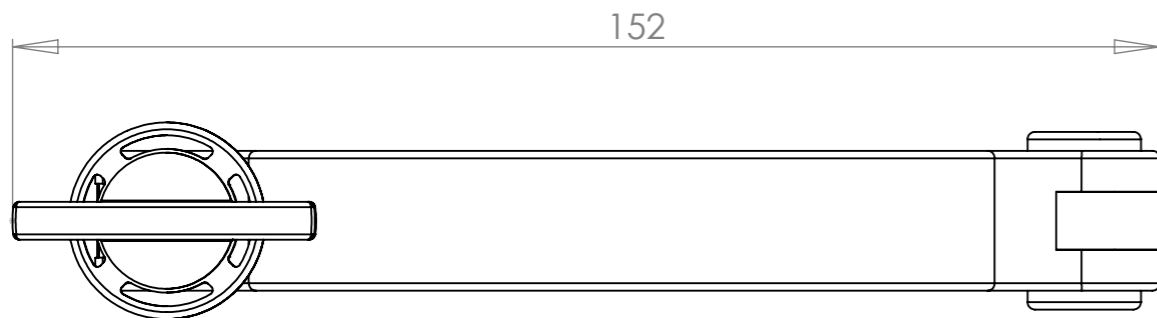
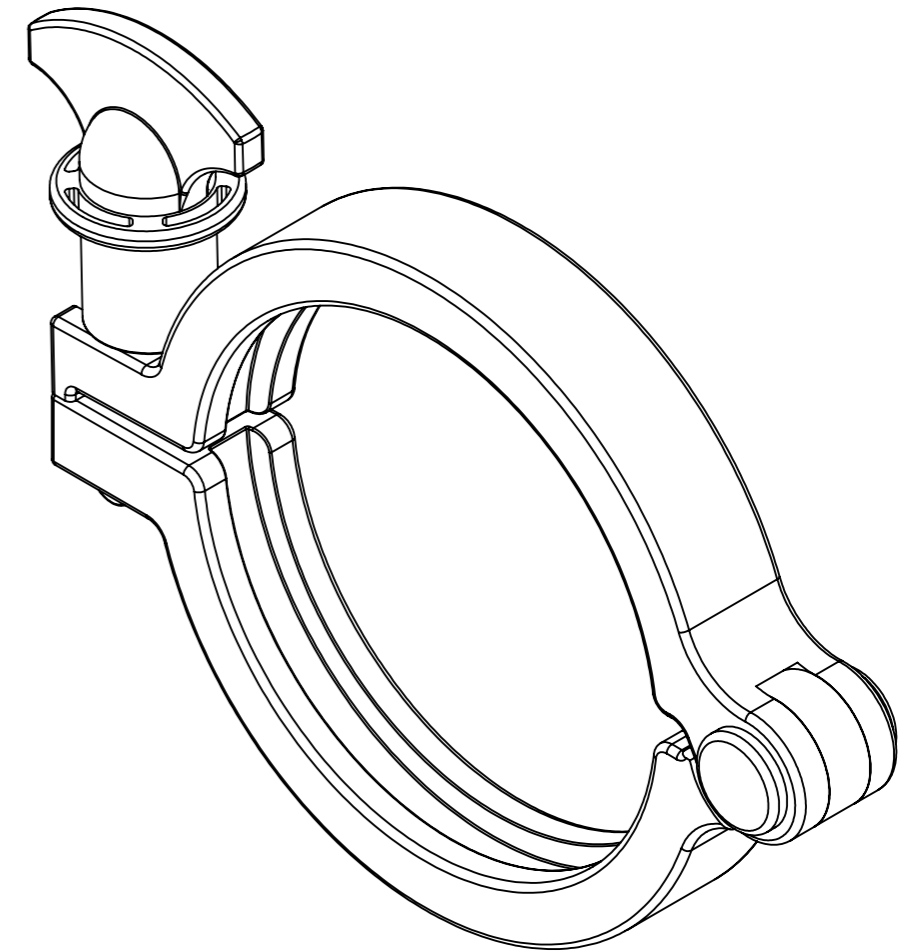
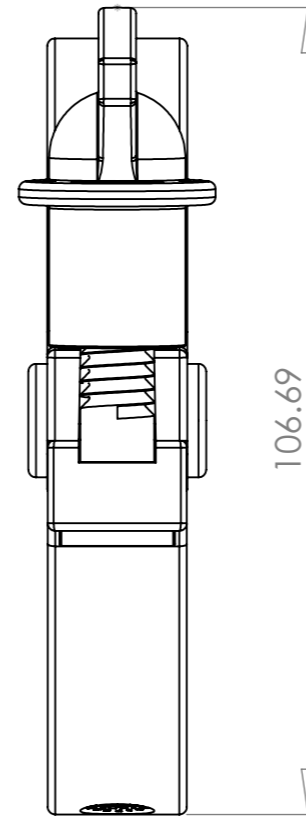
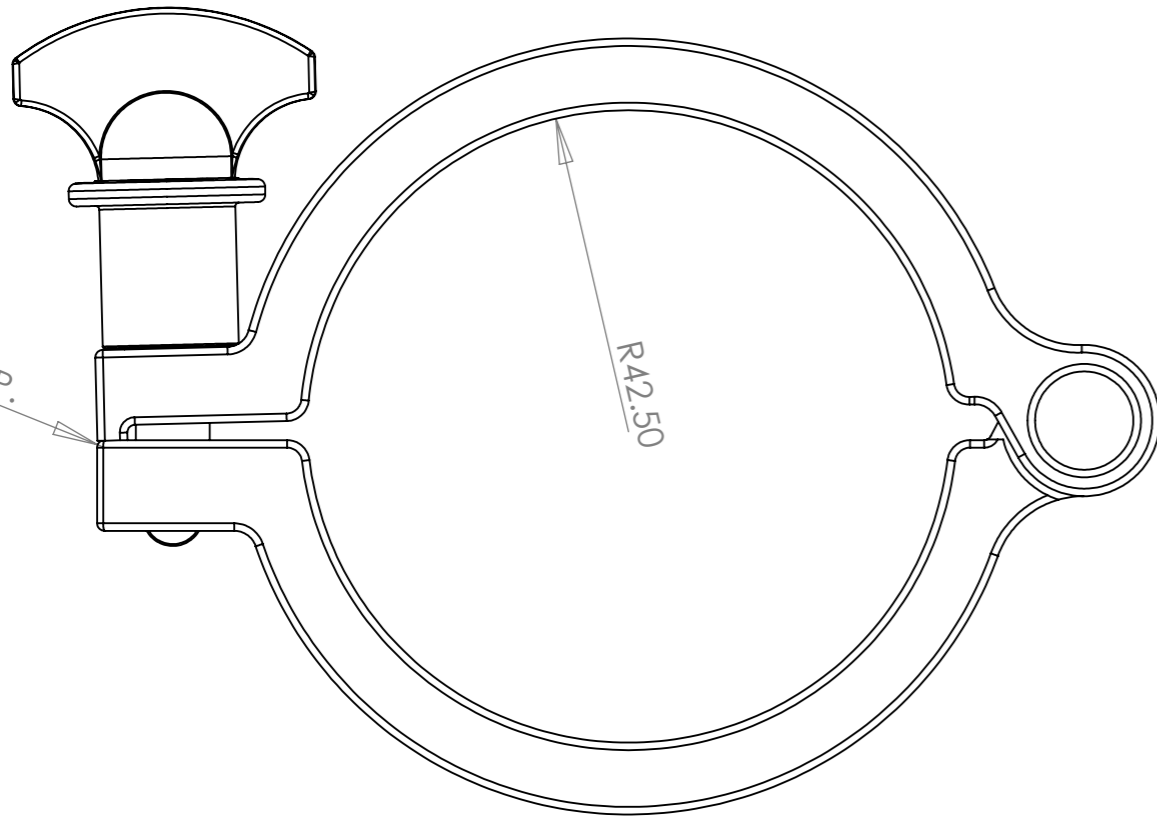


REVISIONS				
ZONE	REV.	DESCRIPTION	DATE	APPROVED
	C	Tamper Evident Wing Nut Added	15/05/2011	
	D	WING NUT AND DIMENSION AMENDMENTS	06/02/2012	



CLOCK



NOTES:

1. NO CONTAMINATION ALLOWED
2. MAXIMUM SPLIT LINE FLASH 0.2mm
3. INJECTION GATE MARK TO BE TRIMMED FLUSH

UK PAT NO:GB2362428  
 UK PAT NO:GB2361753  
 UK PAT NO:GB2352475  
 USA PAT NO:US6708377  
 USA PAT NO:US7384078  
 EUR PAT NO: EP1230505  
 AUSTRALIAN PAT NO:AU774546  
 INDIA PAT NO:IN199286

copyright ©  
 This drawing and its associated design is the property of Bio-pure technology Ltd & may not be copied or used for any purpose other than that for which it was supplied, without the express written authority of bio pure technology Ltd.



Bio-pure technology Ltd.  
 7 Falcon court, Parklands business park,  
 Denmead, Po7 6BZ  
 Tel. +44 (0) 2392 499000  
 Fax. +44 (0) 2392 499001  
 Email. sales@biopuretech.com  
 Web. www.biopuretech.com

ITEM	QTY	PART ID	MATERIAL	FILE NAME: CLAMP 3 ASSY
UNLESS OTHERWISE STATED DIMENSIONS IN mm TOL = +/- 1.0mm ANGLES = +/- 1.0 DEG	SIZE A4	ISSUE: C	FINISH: WHITE WT 192	TITLE:
		SHEET: 1	MATERIAL: GLASS REINFORCED NYLON	BIO-CLAMP NG300WHT
SCALE NTS			DEBUR AND BREAK SHARP EDGES	DWG NO:
			WEIGHT: DENSITY:	NG300WHT