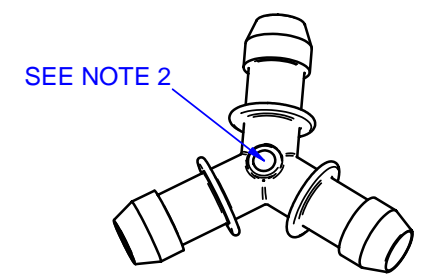
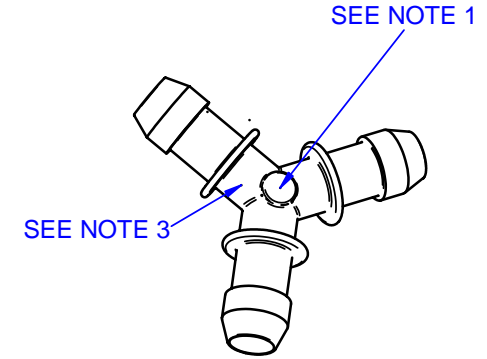
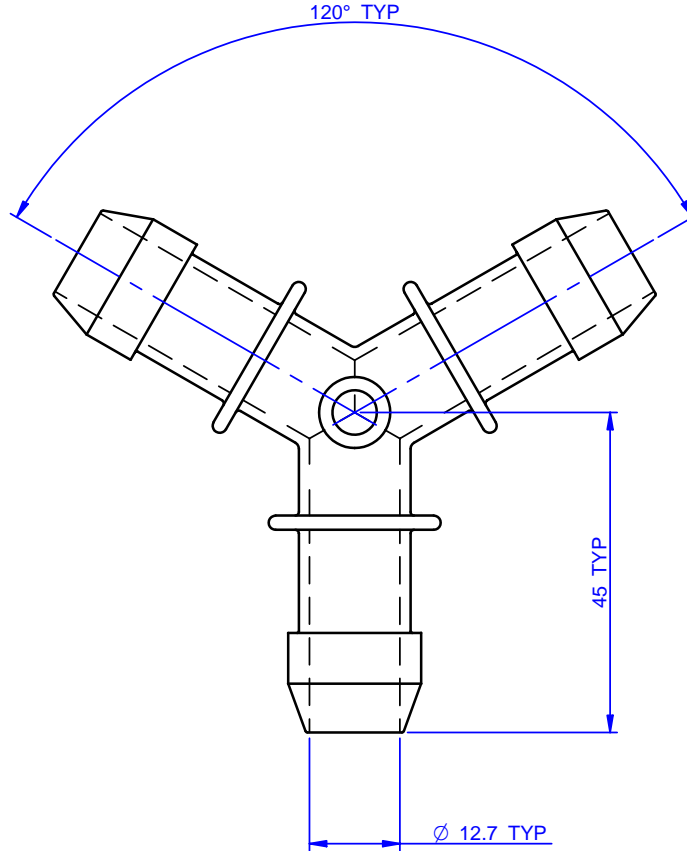
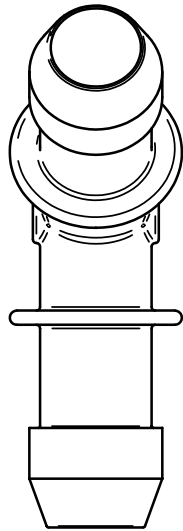


1 2 3 4 5 6 7 8

DO NOT SCALE DRAWING IF IN DOUBT - ASK 3rd ANGLE PROJECTION

DRAWING NUMBER		
<b>PP0500BY-CD</b>		
ISSUE	DESCRIPTION	DATE
1	INITIAL DRAWING	26/04/05

PATENT PENDING GB 0509362.0  
 PATENT PENDING US 11/053657  
 PATENT PENDING EEC 05075275.7



- NOTES:**
- BATCH CODE TO BE MOULDED ON PART IN THIS AREA.
  - INJECTION FEED MARK TO BE FLUSH.
  - COMPONENT SIZE IDENTIFICATION TO MOULDED IN THIS POSITION.
  - NO FLASH OR IMPERFECTIONS PERMISSABLE ON FRONT EDGE OF SPOUTS.
  - NO FLASH PERMISSABLE ON INTERNAL CORE INTERSECTION.
  - NO CONTAMINATION ALLOWED.
  - PART TO BE MANUFACTURED IN CLEANROOM ENVIROMENT.

**© COPYRIGHT**

This drawing and its associated design is the property of Bio-Pure Technology Ltd & may not be copied or used for any purpose other than that for which it is supplied, without the express written authority of Bio-Pure Technology Ltd

**DIMENSIONS IN MILLIMETERS**

TOLERANCES UNLESS STATED  
 0 DEC PLACE +/- 0.5  
 1 DEC PLACE +/- 0.25  
 2 DEC PLACES +/- 0.10  
 ANGULAR +/- 0.5 DEG

**MATERIAL AND SPECIFICATION**

PP Natural  
 Borealis HD810MO

**DRAWN BY**

**MJF**

**CHECKED BY**

**PR**

**DATE**

**26/04/05**

**APPROVED BY**

**RM**

**FINISH**

**CLEAN**

**SCALE**

**1:1**

**Bio-Pure Technology Ltd.**

17 South Street, Havant, Hants PO91BU ENGLAND  
 Tel. +44 (0) 2392 499000 Fax. +44 (0) 2392 499001  
 Email. sales@biopuretech.com  
 Web. www.biopuretech.com

**TITLE**

**1/2" BIO Y CONNECTOR**

**PART No:**

**PP0500BY**